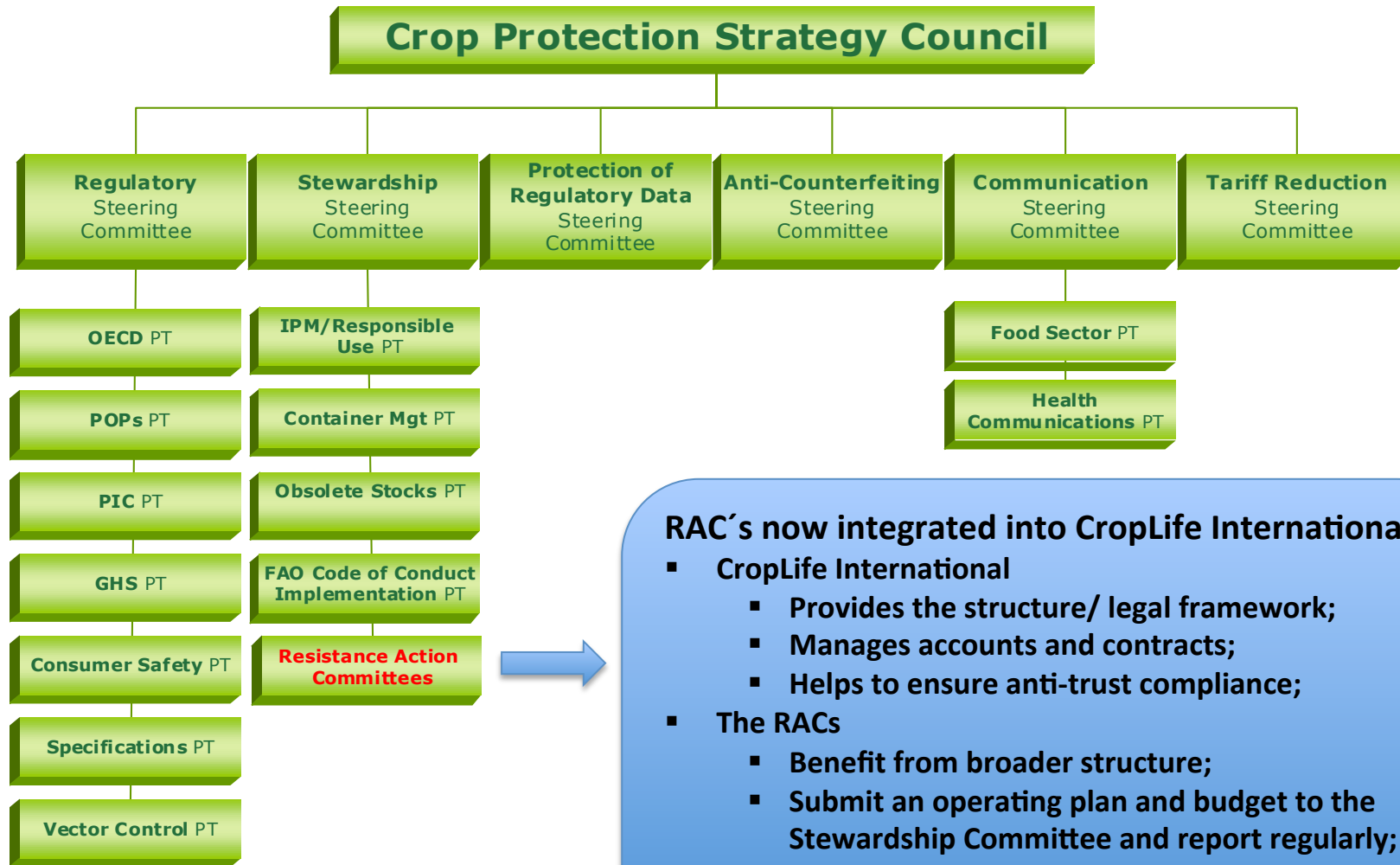


Integration of the Resistance Action Committees into CropLife International



RAC's now integrated into CropLife International

- **CropLife International**
 - Provides the structure/ legal framework;
 - Manages accounts and contracts;
 - Helps to ensure anti-trust compliance;
- **The RACs**
 - Benefit from broader structure;
 - Submit an operating plan and budget to the Stewardship Committee and report regularly;
 - Adhere to processes, incl. anti-trust compliance.